

TECHNICAL ANALYSIS - PROJECT LESS / PARIS

VINCENT PARREIRA
AAVP ARCHITECTURE
2016

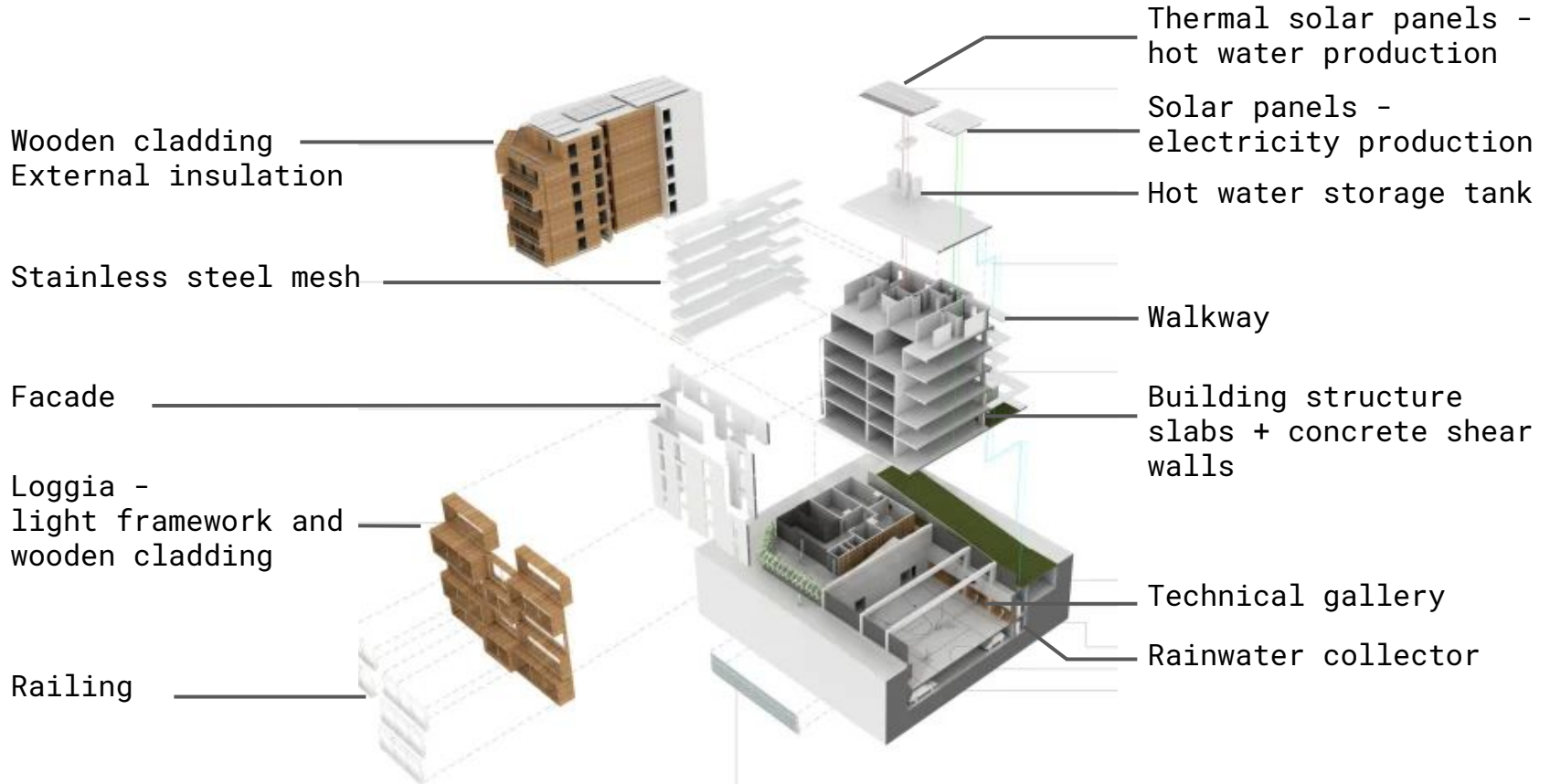
69 UNITS OF SOCIAL
HOUSING
PARIS Xème

GROUP 7

Ivana KÚSKOVÁ
Antonio LUCIANO
Elise MATHON



BUILDING DECOMPOSITION



MATERIALS



CONCRETE

- Slabs
- Shear walls
- Building columns



STEEL

- Railing
- Catwalk bracing
- Catwalks columns and beams



WOOD

- Balustrade of railing
- Larchwood for the loggia
- Facade cladding on the facades



STRUCTURAL FRAMEWORK

wall's system combine modular system (walls + columns)

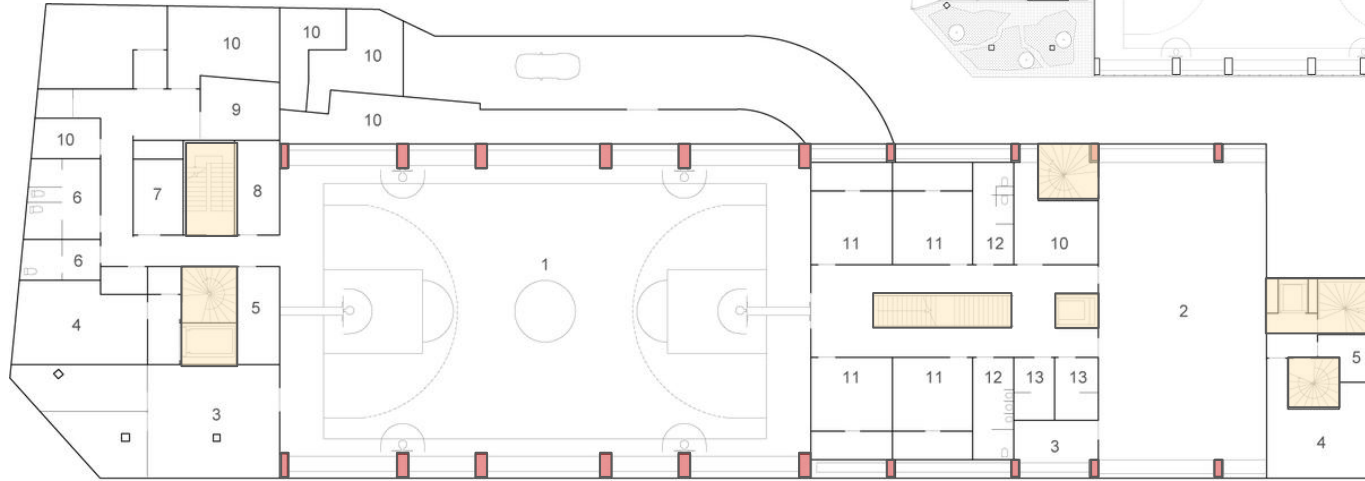


0 1 2 5 10

ELEVATION PASSAGE DELESSERT

CONSTRUCTION SYSTEM

combine modular system (wall + column)

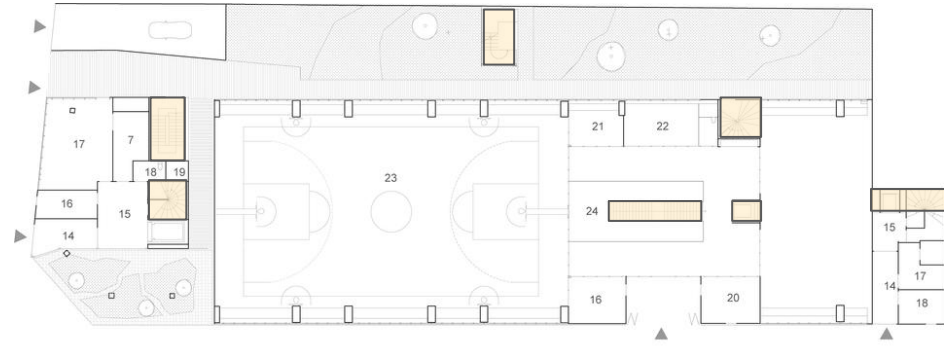


■ COLUMN 700x1400;500x1000
modul 7500 mm/4500 mm

■ vertical circulation

R-1

0 1 2 5 10



RDC 0 1 2 5 10

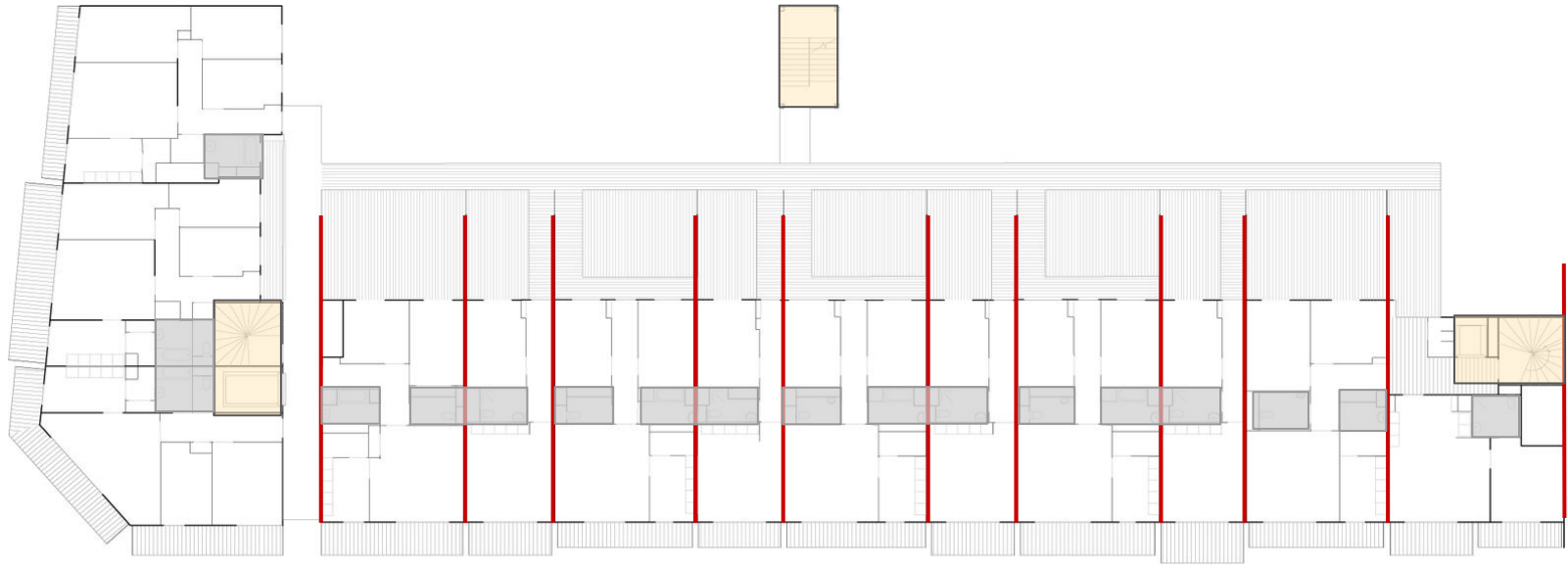


The housing units stand above the structure of the gymnasium

STRUCTURE - series of arcades spanning a distance of more than 20 meters

ARCADES -steel plates form -determine the framework for the upper-level load bearing walls

MODULAR SYSTEM OF WALLS



— load bearing WALL
modul 7500 mm/4500 mm

□ vertical circulation

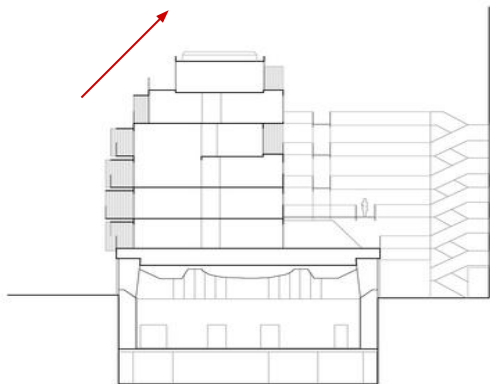
□ hygienic core

R+1

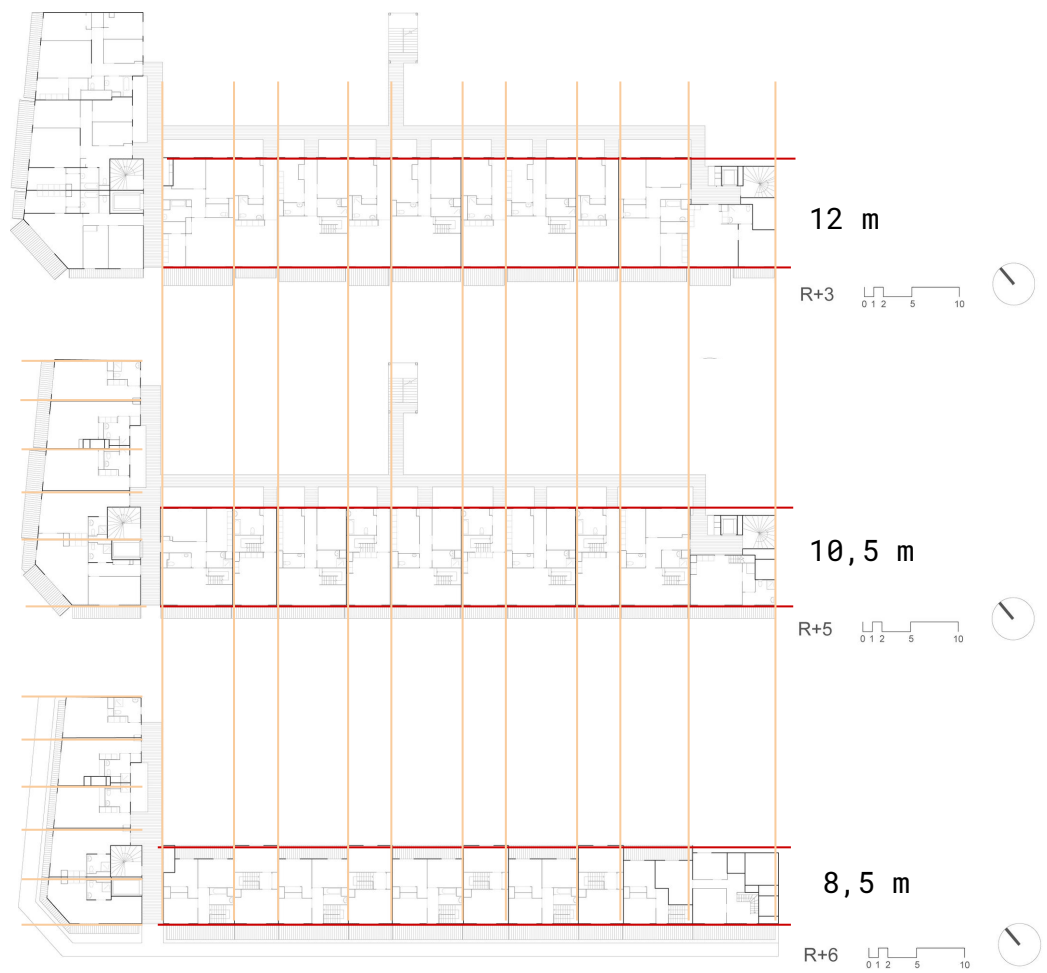
0 1 2 5 10



SYSTEM OF WALLS on higher floors

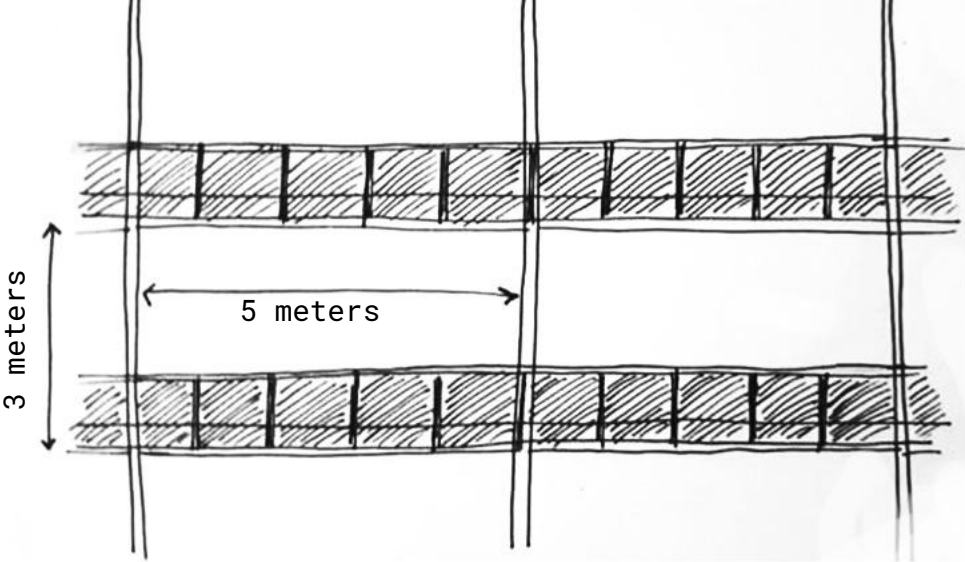


0 1 2 5 10 COUPE



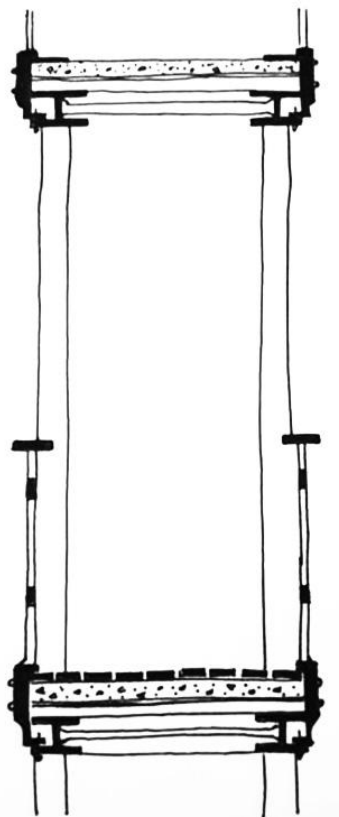
— transversal wall
— longitudinal wall

CATWALKS AND STAIRWAYS IMPLEMENTATION

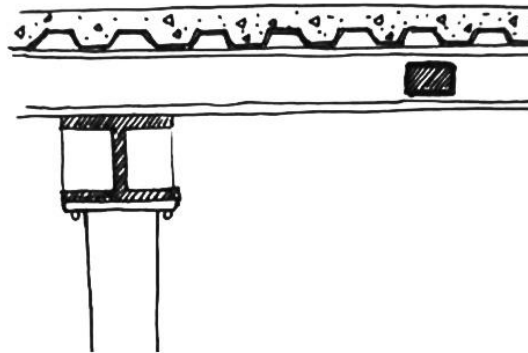


Outdoor walkway structure

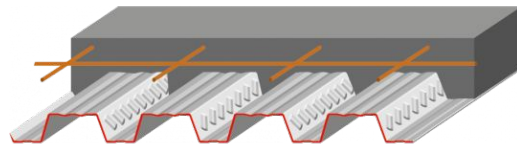




Catwalk section



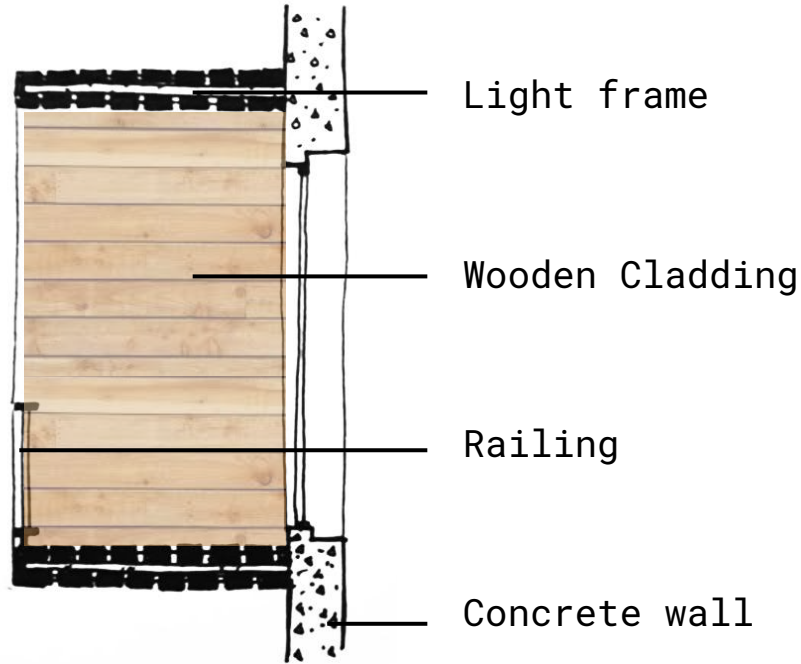
Catwalk section



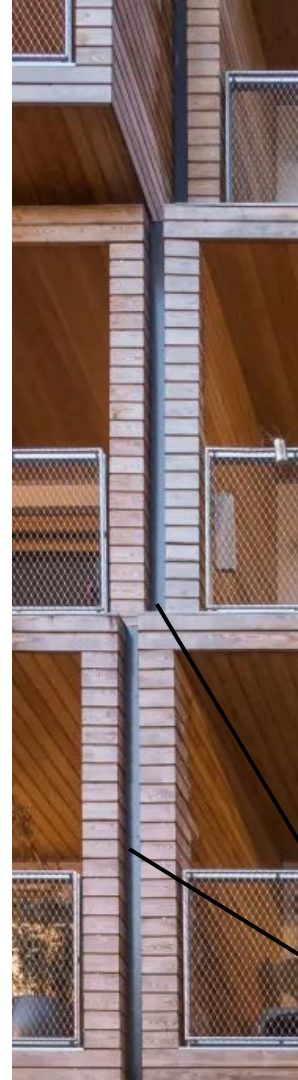
Composite steel
(trapezoidal sheet) with
concrete floor



LOGGIAS IMPLEMENTATION



Loggia section



Rainwater channels