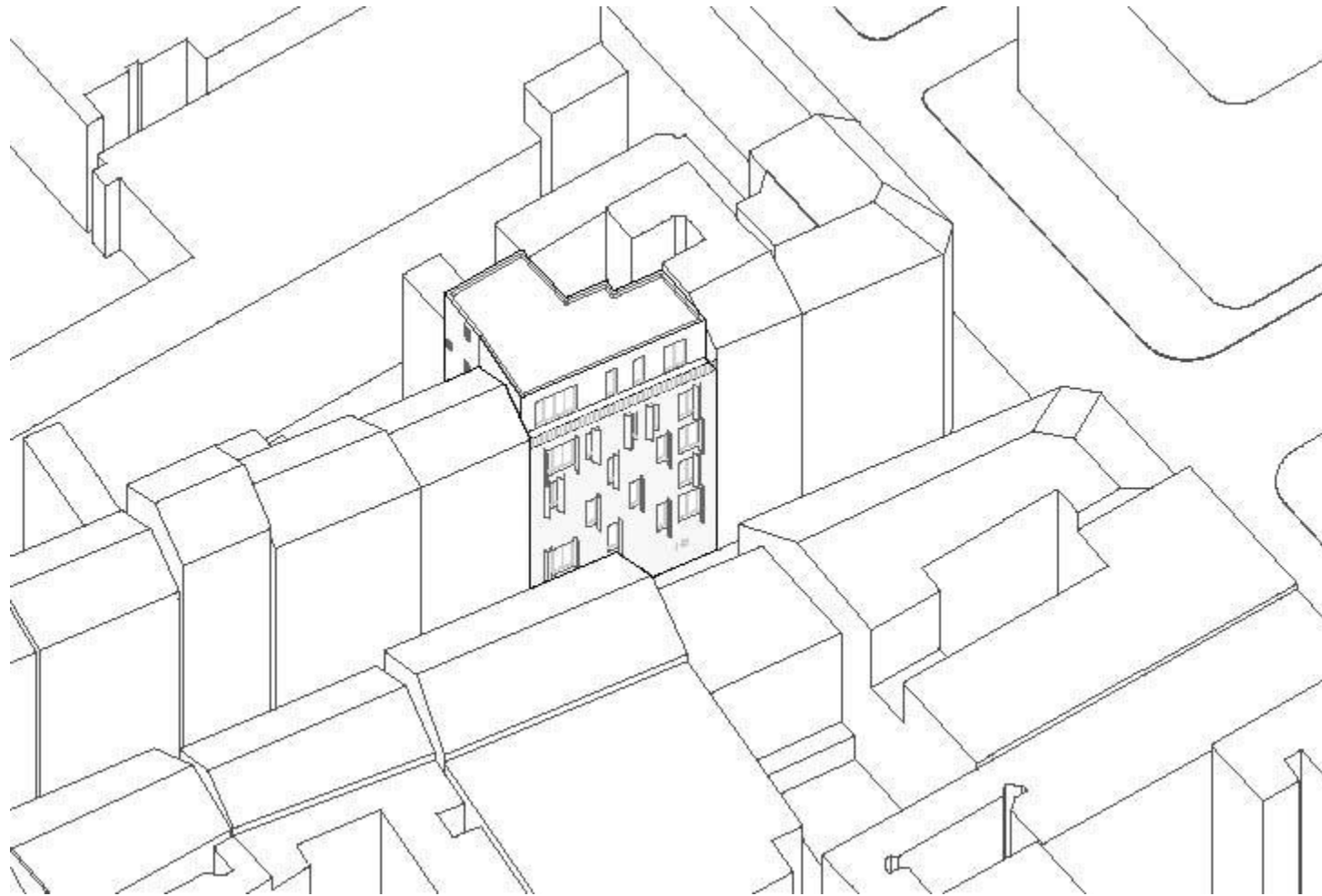


LEGENDRE  
Avenier Cornejo

# Street



# Axonometry



Ground floor

- 1.Common space
- 2.Communication
- 3.Garden
- 4.Bike garage
- 5.Dumpster



Typical Floor



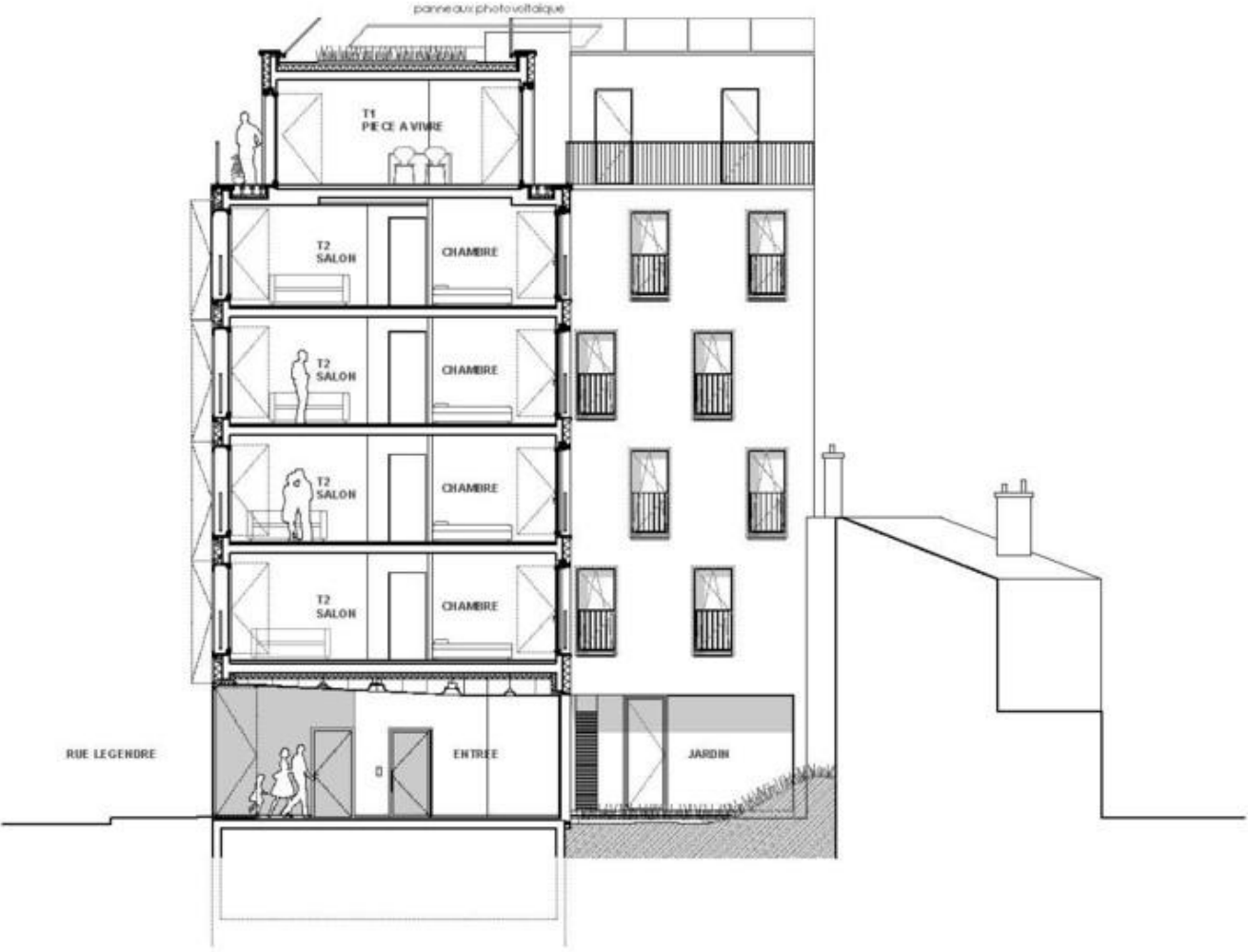
Upper floor





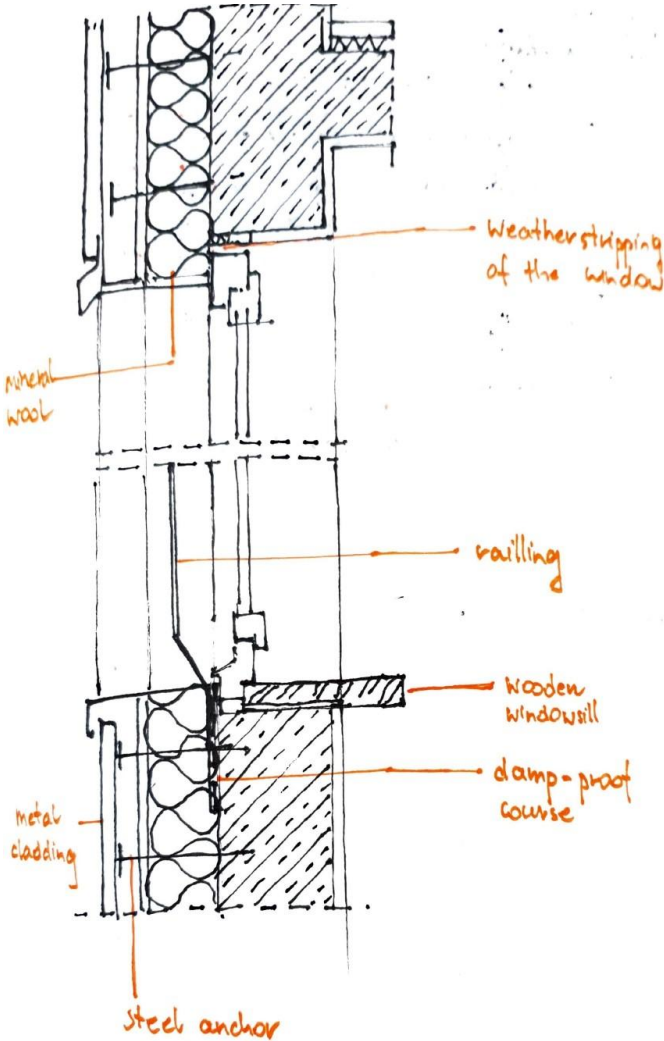


# Section of the building

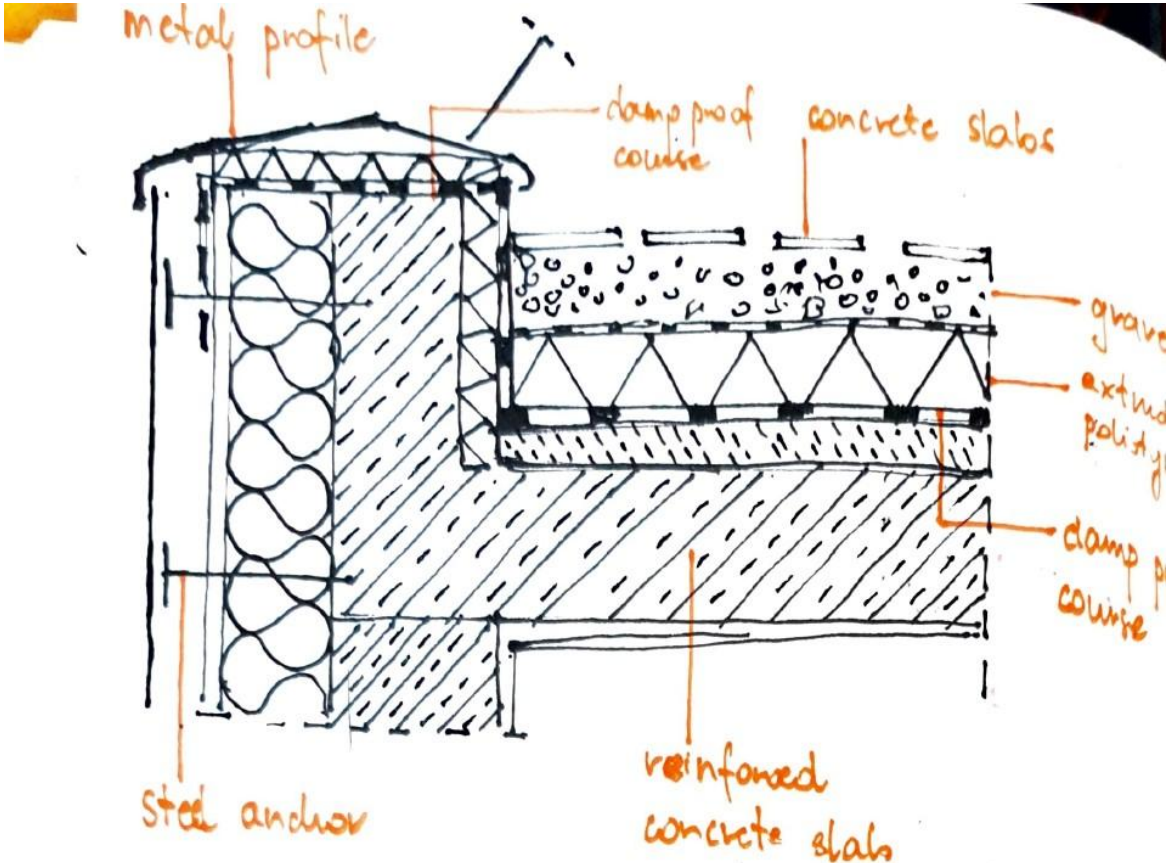




# Detail of the window



# Detail of the attic wall



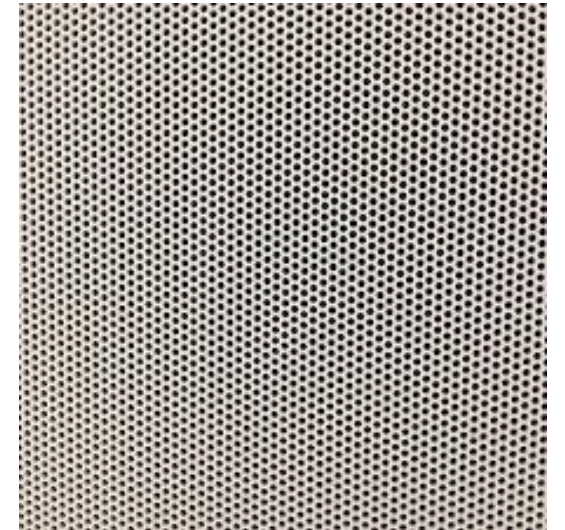
# Materials



Concrete

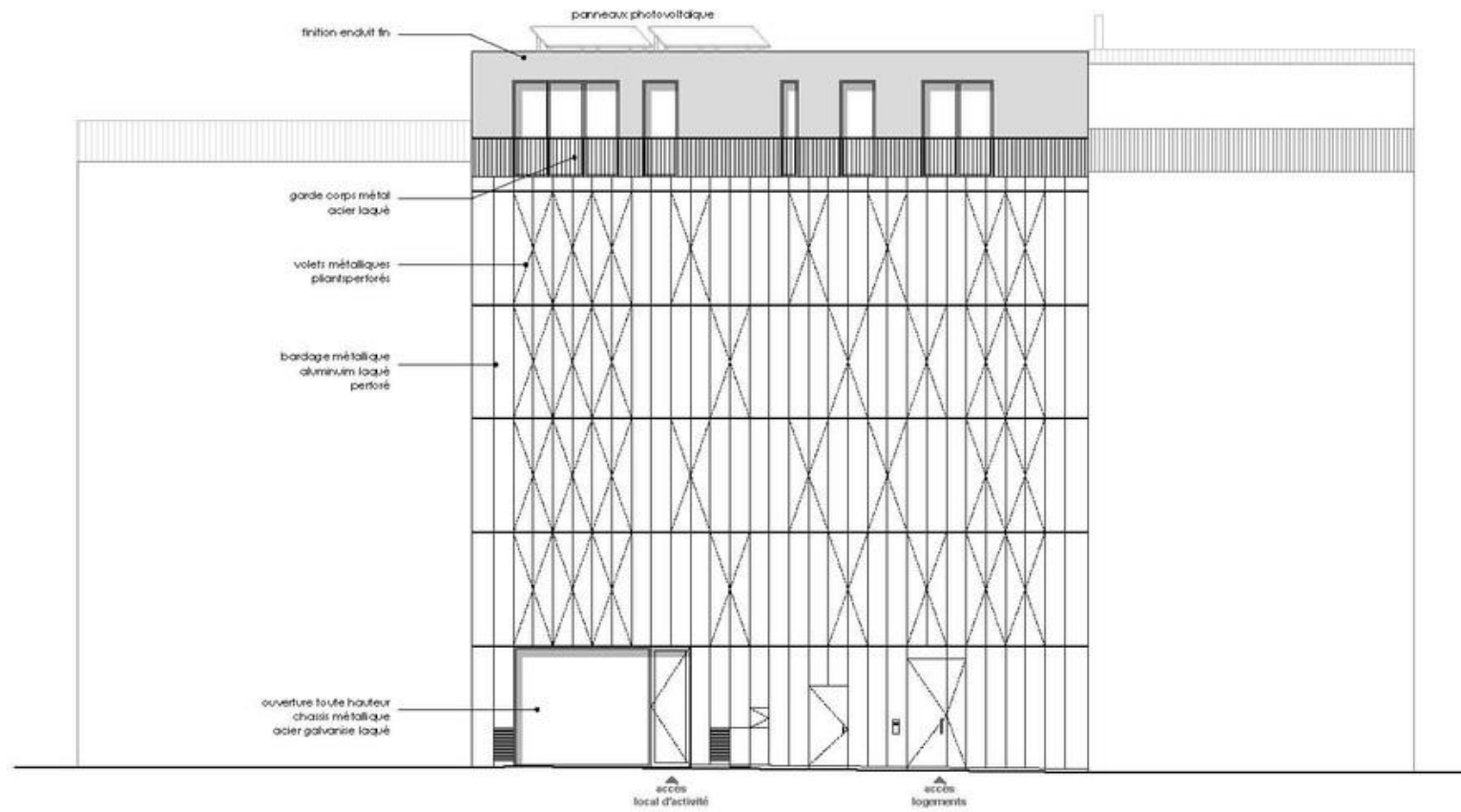


Glass



Perforated metal

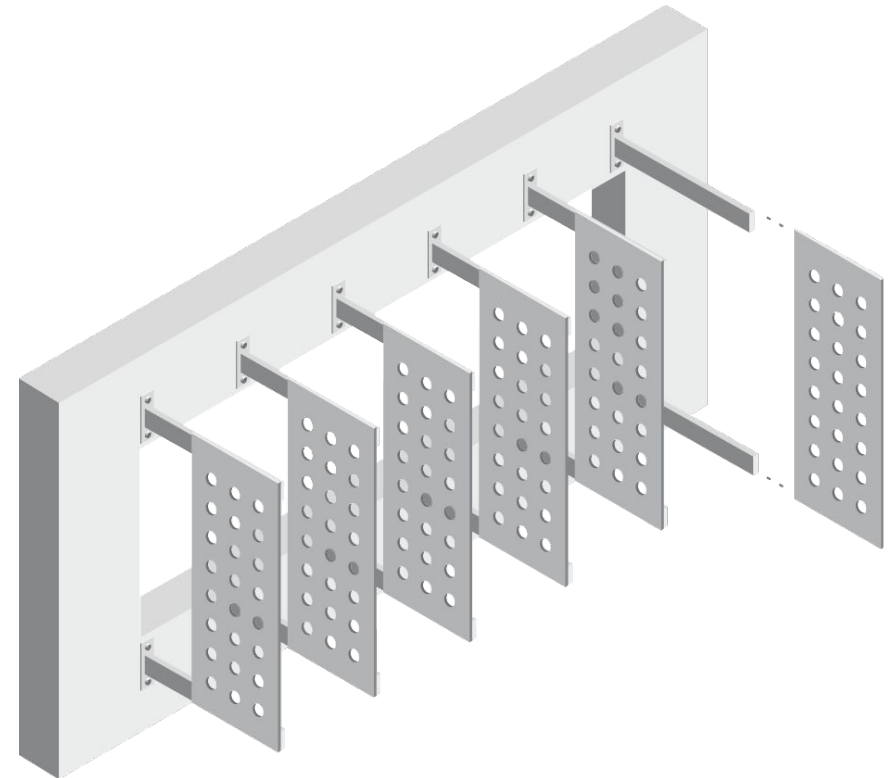
# Facade detail



# Perforated metal panels

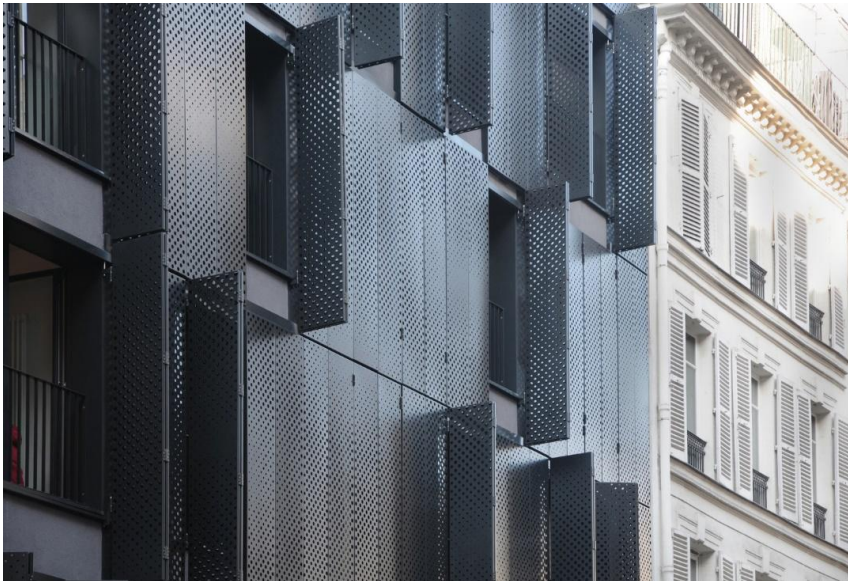
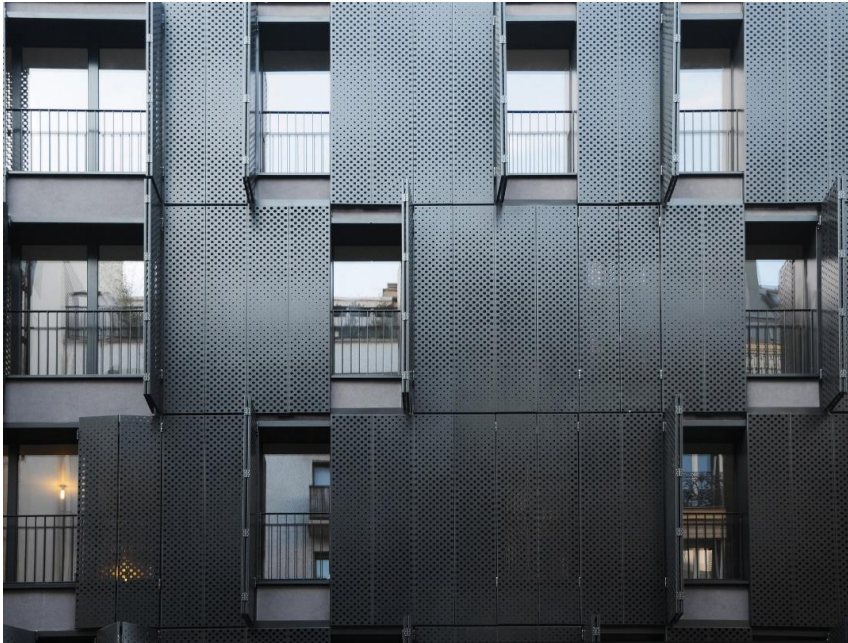
In-fill panels are used for exterior architectural applications such as interior or covered walkways, staircases, balconies and railing systems. While still allowing occupants to see outside, in-fill panels provide:

- Sun shading
- Wind screening
- Noise abatement
- Privacy
- Safety
- Stability to a rail, balcony or walkway system





# Facade of Legendre Palace





Thank you for your attention